

# FINITURE PER INTERNO

Indoor finishes . Finitions pour l'intérieur . Ausführungen für den Innenbereich . Acabados para interior

## GHISA E ACCIAIO VERNICIATO

Cast-iron and steel powder coated . Fonte et acier epoxy . Gusseisen und stahl lackiert . Hierro fundido y acero barnizado



**BI100**  
Bianco,  
finitura gofrata-opaca  
*White,*  
*textured-matt finish*



**BI200**  
Bianco,  
finitura gofrata-opaca  
*White,*  
*textured-matt finish*



**BI300**  
Bianco,  
finitura liscia-opaca  
*White,*  
*smooth-matt finish*



**BI400**  
Bianco,  
finitura liscia-lucida  
*White,*  
*smooth-glossy finish*



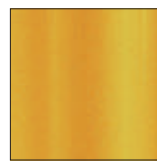
**SA100**  
Sabbia,  
finitura gofrata-opaca  
*Sand,*  
*textured-matt finish*



**SA200**  
Sabbia,  
finitura gofrata-opaca  
*Sand,*  
*textured-matt finish*



**SA300**  
Sabbia,  
finitura bucciata-lucida  
*Sand,*  
*hammered-glossy finish*



**GI100**  
Giallo,  
finitura gofrata-opaca  
*Yellow,*  
*textured-matt finish*



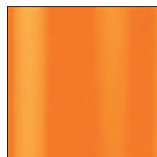
**AR200**  
Arancio,  
finitura gofrata-opaca  
*Orange,*  
*textured-matt finish*



**AR500**  
Arancio,  
finitura gofrata-opaca  
*Orange,*  
*textured-matt finish*



**AR400**  
Arancio,  
finitura gofrata-opaca  
*Orange,*  
*textured-matt finish*



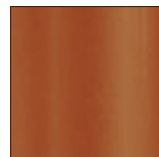
**AR300**  
Arancio,  
finitura liscia-lucida  
*Orange,*  
*smooth-glossy finish*



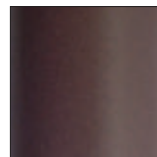
**RO200**  
Rosso,  
finitura gofrata-opaca  
*Red,*  
*textured-matt finish*



**RO100**  
Rosso,  
finitura liscia-lucida  
*Red,*  
*smooth-glossy finish*



**TE**  
Terracotta,  
finitura gofrata-opaca  
*Terracotta,*  
*textured-matt finish*



**RU**  
Ruggine,  
finitura gofrata-opaca  
*Rust,*  
*textured-matt finish*



**MG**  
Marrone,  
finitura gofrata-opaca  
*Brown,*  
*textured-matt finish*



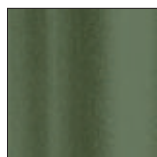
**AZ100**  
Azzurro,  
finitura gofrata-opaca  
*Light blue,*  
*textured-matt finish*



**BL300**  
Blu,  
finitura gofrata-opaca  
*Blue,*  
*textured-matt finish*



**VE100**  
Verde salvia,  
finitura gofrata-opaca  
*Sage green,*  
*textured-matt finish*



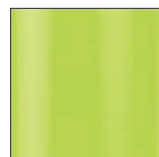
**VE300**  
Verde bosco,  
finitura gofrata-opaca  
*Forest green,*  
*textured-matt finish*



**6005**  
Verde,  
finitura liscia-lucida  
*Green,*  
*smooth-glossy finish*



**VE400**  
Verde,  
finitura gofrata-opaca  
*Green,*  
*textured-matt finish*



**VE200**  
Verde,  
finitura liscia-lucida  
*Green,*  
*smooth-glossy finish*



**BE100**  
Beige,  
finitura gofrata-opaca  
*Beige,*  
*textured-matt finish*



**BE200**  
Beige,  
finitura gofrata-opaca  
*Beige,*  
*textured-matt finish*



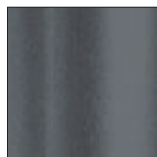
**AL**  
Alluminio,  
finitura liscia-lucida  
*Aluminium,*  
*smooth-glossy finish*



**9007**  
Alluminio,  
finitura liscia-opaca  
*Aluminium,*  
*smooth-matt finish*



**AG**  
Alluminio,  
finitura gofrata-opaca  
*Aluminium,*  
*textured-matt finish*



**GA**  
Grigio antracite,  
finitura gofrata-opaca  
*Anthracite grey,*  
*textured-matt finish*



**GN**  
Grigio naturale,  
finitura gofrata-opaca  
*Natural grey,*  
*textured-matt finish*



**NERO**  
Nero,  
finitura bucciata-opaca  
*Black,*  
*hammered-matt finish*



**NEF**  
Nero soft-touch,  
finitura liscia-opaca  
*Black soft-touch,*  
*smooth-matt finish*



**TR**  
Verniciatura trasparente,  
finitura liscia-opaca  
*Transparent powder coated,*  
*smooth-matt finish*

# FINITURE PER ESTERNO

Outdoor finishes . Finitions pour l'extérieur . Ausführungen für den Außenbereich . Acabados para exterior

## GHISA E ACCIAIO VERNICIATO

Cast-iron and steel powder coated . Fonte et acier epoxy . Gusseisen und stahl lackiert . Hierro fundido y acero barnizado



**B1100E**  
Bianco,  
finitura gofrata-opaca  
*White,*  
*textured-matt finish*



**BI200E**  
Bianco,  
finitura gofrata-opaca  
*White,*  
*textured-matt finish*



**BI300E**  
Bianco,  
finitura liscia-opaca  
*White,*  
*smooth-matt finish*



**SA100E**  
Sabbia,  
finitura gofrata-opaca  
*Sand,*  
*textured-matt finish*



**SA200E**  
Sabbia,  
finitura gofrata-opaca  
*Sand,*  
*textured-matt finish*



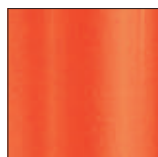
**GI100E**  
Giallo,  
finitura gofrata-opaca  
*Yellow,*  
*textured-matt finish*



**AR200E**  
Arancio,  
finitura gofrata-opaca  
*Orange,*  
*textured-matt finish*



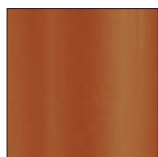
**AR500E**  
Arancio,  
finitura gofrata-opaca  
*Orange,*  
*textured-matt finish*



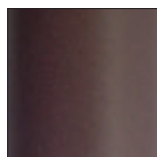
**AR400E**  
Arancio,  
finitura gofrata-opaca  
*Orange,*  
*textured-matt finish*



**RO200E**  
Rosso,  
finitura gofrata-opaca  
*Red,*  
*textured-matt finish*



**TEE**  
Terracotta,  
finitura gofrata-opaca  
*Terracotta,*  
*textured-matt finish*



**RUE**  
Ruggine,  
finitura gofrata-opaca  
*Rust,*  
*textured-matt finish*



**MGE**  
Marrone,  
finitura gofrata-opaca  
*Brown,*  
*textured-matt finish*



**AZ100E**  
Azzurro,  
finitura gofrata-opaca  
*Light blue,*  
*textured-matt finish*



**BL300E**  
Blu,  
finitura gofrata-opaca  
*Blue,*  
*textured-matt finish*



**VE100E**  
Verde salvia,  
finitura gofrata-opaca  
*Sage green,*  
*textured-matt finish*



**VE300E**  
Verde bosco,  
finitura gofrata-opaca  
*Forest green,*  
*textured-matt finish*



**6005E**  
Verde,  
finitura liscia-lucida  
*Green,*  
*smooth-glossy finish*



**BE100E**  
Beige,  
finitura gofrata-opaca  
*Beige,*  
*textured-matt finish*



**BE200E**  
Beige,  
finitura gofrata-opaca  
*Beige,*  
*textured-matt finish*



**ALE**  
Alluminio,  
finitura liscia-lucida  
*Aluminium,*  
*smooth-glossy finish*



**9007E**  
Alluminio,  
finitura liscia-opaca  
*Aluminium,*  
*smooth-matt finish*



**AGE**  
Alluminio,  
finitura gofrata-opaca  
*Aluminium,*  
*textured-matt finish*



**GAE**  
Grigio antracite,  
finitura gofrata-opaca  
*Anthracite grey,*  
*textured-matt finish*



**GNE**  
Grigio naturale,  
finitura gofrata-opaca  
*Natural grey,*  
*textured-matt finish*



**NPE**  
Nero,  
finitura gofrata-opaca  
*Black,*  
*textured-matt finish*